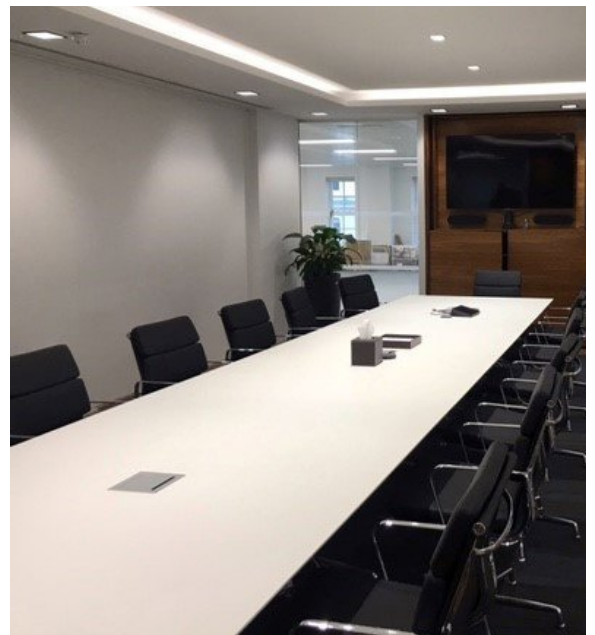




# FULLY FITTED OFFICES TO LET



10 Old Burlington Street  
8,557 sq ft of high quality, fitted space in a prime  
Mayfair building  
Offered by way of assignment



# Accomodation

3rd floor 8,557 sq ft 795 sq m

# Location

Moments from Savile Row and Bond Street with the Burlington Arcade and Regent Street on your doorstep.

# Specification

Commissionaire, fitted out, 16 person boardroom, 4 x meeting rooms, kitchen, reception, fully cabled, raised floors, new bike rack and shower facilities.

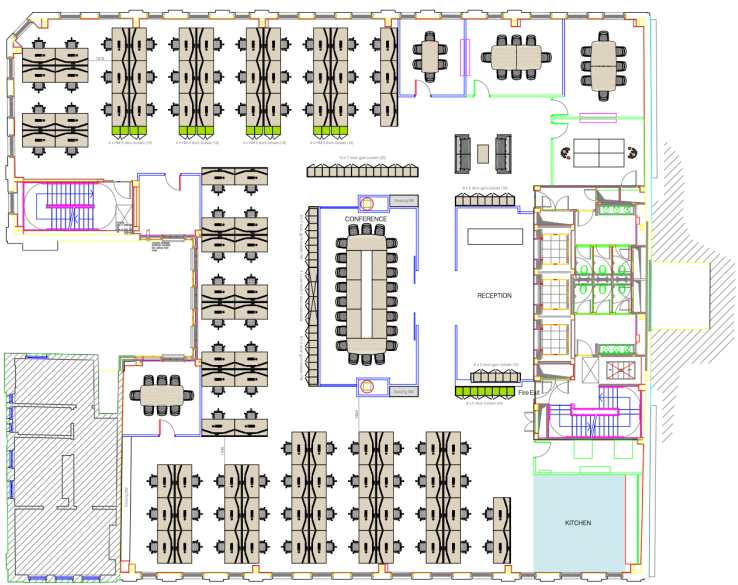
# Financials

Rent  
On Application

Rates Payable  
£42.95 per sq ft per annum

Service Charge  
On Application

EPC Rating  
On Application



Contact: Stephen English

Phone: 07887 821387 / 020 7256 4970

Email: [stephen@hbcrealestate.co.uk](mailto:stephen@hbcrealestate.co.uk)



These Particulars are believed to be correct at time of going to Press, but the Agent reserves the right to change the Particulars in the future. However, the Assignee/ Agents of this property give notice that: (1) These Particulars are intended as a general outline only, for the guidance of prospective purchasers or tenants, and do not constitute the whole or any part of an offer or contract. (2) They cannot guarantee the accuracy of any description, dimension or other details contained in these Particulars and prospective purchasers or tenants should not rely on them as statements of fact or representation, but must satisfy themselves as to the accuracy of such details. (3) No employee of the Agents has any authority to make or give any representation or warranty, or enter into any contract whatsoever in relation to the property. Designed and produced by JonnyWattUK©2022